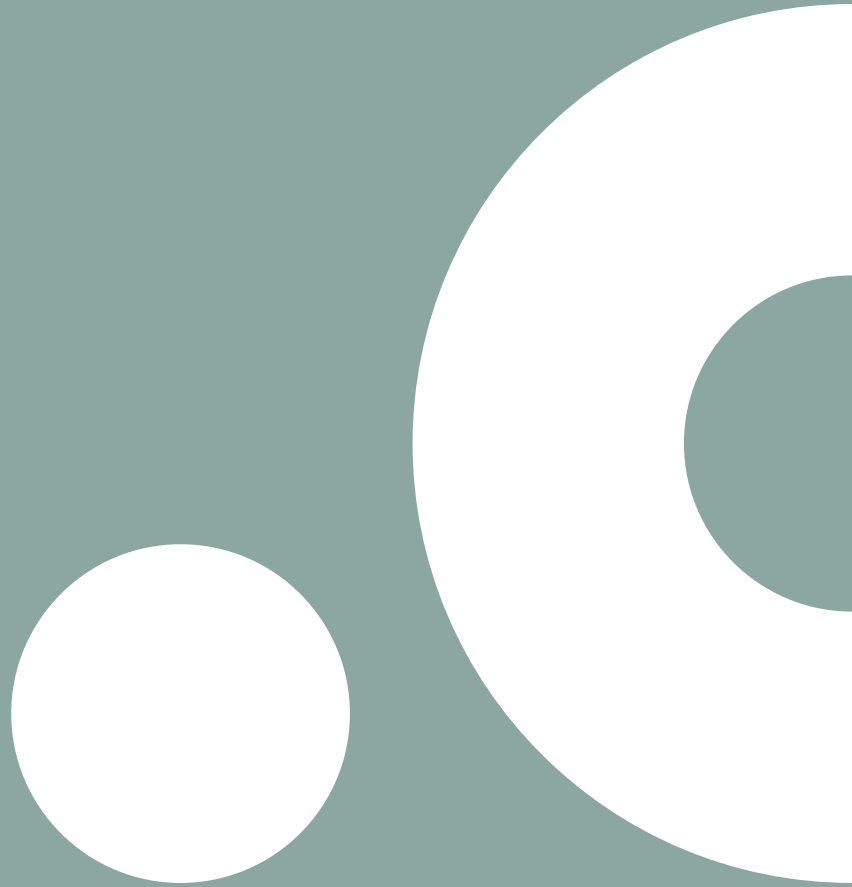


**Flokk:**

**2022**



**FABRICS  
& COLOURS  
STANDARD COLLECTION**

# Standard Collection

## TECHNICAL SPECIFICATIONS

	CURA by Gabriel	XTREME by Camira	SELECT by Gabriel	CAPTURE by Gabriel	PATINA by Camira	NEXUS by Camira	NOTE by Gabriel	STEELCUT TRIO 3 by Kvadrat	SIRDAL/SULDAL by GU*	COMFORT+ by Gabriel	PALOMA SOFT by Wollsdorf	ELMOSOFT by Elmo leather
<b>COMPOSITION (%)</b>												
Wool	-	-	85	85	69	-	85	90	-	-	-	-
Norwegian wool	-	-	-	-	-	-	-	-	100	-	-	-
Flax	-	-	-	-	22	-	-	-	-	-	-	-
Polyurethane	-	-	-	-	-	-	-	-	-	12	-	-
Polyamide	-	-	15	15	8	-	15	10	-	-	-	-
Polyester	2	-	-	-	-	100	-	-	-	51	-	-
Post-consumer recycled Polyester	98	100	-	-	-	-	-	-	-	-	-	-
Recycled Polyester	-	-	-	-	-	-	-	-	-	37	-	-
Viscose	-	-	-	-	1	-	-	-	-	-	-	-
Cattle hides	-	-	-	-	-	-	-	-	-	-	100	100
<b>ENVIRONMENTAL FACTS</b>												
EU Ecolabel	◆	◆	◆	◆	◆	-	◆	◆	◆	-	-	-
Oeko-Tex® Standard 100	◆	◆	◆	◆	-	◆	◆	-	-	◆	◆	◆
ISO 14001 certified (company)	◆	◆	◆	◆	◆	◆	◆	◆	◆	◆	◆	◆
100% free of heavy metals	◆	◆	◆	◆	◆	◆	◆	◆	◆	-	◆	◆
No flame retardants	◆	-	◆	◆	◆	-	◆	◆	◆	-	◆	◆
ECO2L	-	-	-	-	-	-	-	-	-	-	◆	-
Blue Angel RAL-U2 148	-	-	-	-	-	-	-	-	-	-	◆	-
Chrome-free leather tanning	-	-	-	-	-	-	-	-	-	-	◆	◆
Greenguard Gold	-	-	-	-	-	-	-	◆	-	-	-	-
Indoor Advantage Gold	-	◆	-	-	◆	◆	-	-	-	-	-	-
Recyclable	◆	-	-	-	-	-	-	-	-	-	-	-
<b>FLAMMABILITY</b>												
BS EN 1021 - 1,2 (Cig. & Match)	◆	◆	◆	◆	◆	◆	◆	◆	◆	◆ <sup>3)</sup>	◆	◆
BS 7176 Low Hazard	-	◆	-	-	◆	◆ <sup>1)</sup>	-	-	-	-	-	-
BS 7176 Medium Hazard	-	◆	-	-	◆ <sup>1)</sup>	-	-	-	-	-	-	-
BS 5852 Part 1 0,1 Cig. & Match	-	-	◆	◆	◆	-	◆	◆	-	-	-	◆
BS 5852 Crib 5 (with CMHR foam)	-	◆	◆	◆ <sup>2)</sup>	◆	-	◆	◆ <sup>2)</sup>	-	-	◆	◆
DIN 4102 BI	-	◆	-	-	-	-	-	-	-	-	-	◆
NF D 60-013	-	◆	-	-	-	-	-	◆	-	-	-	-
CA TB 117-2013	◆	◆	◆	◆	◆	◆	◆	◆	-	◆	◆	◆
IMO FTP Code 2010 Part 8	-	-	◆	-	-	-	◆	◆	◆	-	◆	◆
<b>FASTNESS TO RUBBING</b>												
Dry	4-5	4	4-5	4-5	4	4	4-5	4-5	4	4-5	1000/4	2000/4
Wet	4-5	4	4-5	4-5	3	4	4	3-5	3-4	4	80/4	80/4
<b>OTHER</b>												
Weight (g/m2)	420	310	510	475	330	305	510	770	800	385	-	-
Width (cm)	140	140	140	140	140	173	140	140	130	140	-	-
Abrasion (Martindale)	100 000	>100 000	200 000	200 000	>100 000	>100 000	200 000	100 000	>58 000	150 000	-	-
Pilling	4-5	4	4	4-5	3	4	4	4	3-4	5	-	-
Light fastness	5-8	6	5-8	5-7	5	5	5-8	6-7	5-7	5-7	6	6
Thickness (mm)	1,1	0,9	1,0	1,1	0,7	1,3	0,9	1,2	1,7	1,0	0,9-1,3	1,1-1,3

### MAINTENANCE

To be vacuumed with a furniture brush or wiped with a clean, white cloth or sponge slightly dampened with clean lukewarm water.

### FOR COMPLETE SPECIFICATION SEE OUR SUPPLIERS WEBISTES

[www.camirafabrics.com](http://www.camirafabrics.com)

[www.gabriel.dk](http://www.gabriel.dk)

[www.gu.no](http://www.gu.no)

[www.kvadrat.dk](http://www.kvadrat.dk)

[www.wollsdorf.com](http://www.wollsdorf.com)

[www.elmoleather.com](http://www.elmoleather.com)

1) Pass with CMHR foam

2) Pass with flame retardant treatment

3) Pass match with CMHR foam

GU\* Gudbrandsdalens Uldvarefabrik

[www.flokk.com](http://www.flokk.com)

# Cura (Gabriel)

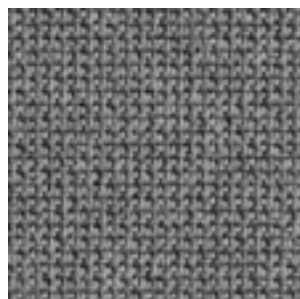
Post-consumer recycled polyester

PG 1

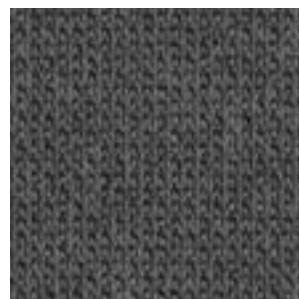
Cura is a two-coloured fabric made from 98% post-consumer recycled polyester. It has a matt, slightly irregular and natural-looking texture where the dark, underlying grey fibers create a discreet yet vibrant melange effect. High durability and stretchability and its soft, voluminous touch make Cura suitable for both office and lounge furniture.



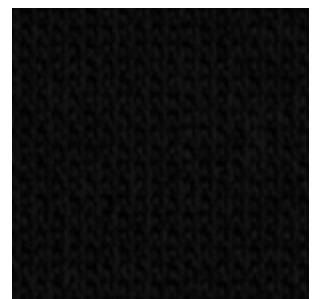
CU66165



CU60110



CU60109



CU60999

# Xtreme (Camira)

100% recycled polyester – crépe structure – stretchy – durable

PG 1

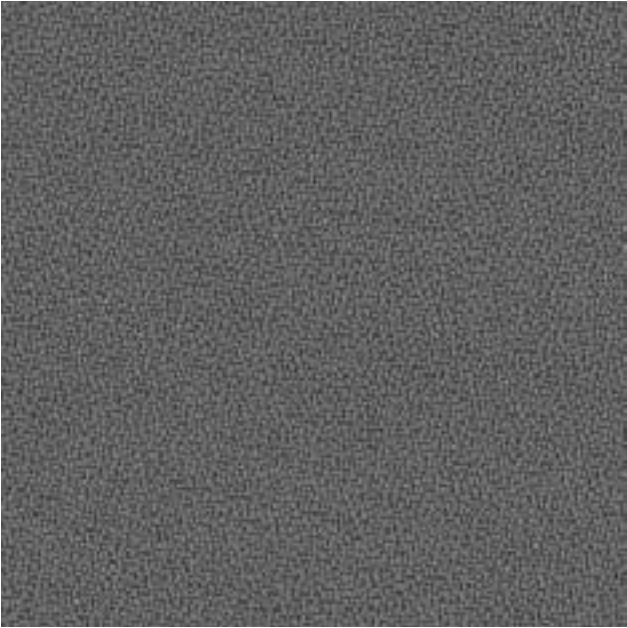
Xtreme is a crepe fabric made from 100% post-consumer recycled polyester that features exceptional Euro flammability performance. Extra stretch and structure gives an irregular, shiny finish.



EXR079



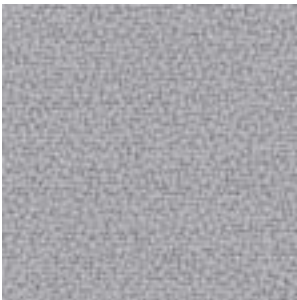
EXR026



EXR081



EXR024



EXR094



EXR145



EXR009

Please note that colours shown in these illustrations may vary from the actual colours.

# Select (Gabriel)

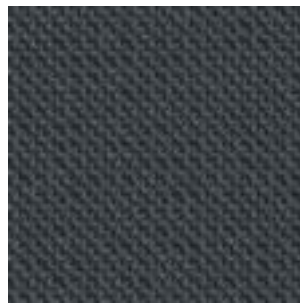
New Zealand wool worsted – diagonal relief structure – soft – durable

PG 2

Select is a classic woolen fabric with a tightly woven relief structure, combining excellent softness, stretch and durability. Its rich texture with the interplay of light and shadow add depth in all the colours in the palette. 85% New Zealand wool



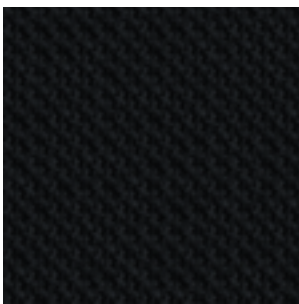
SC60139



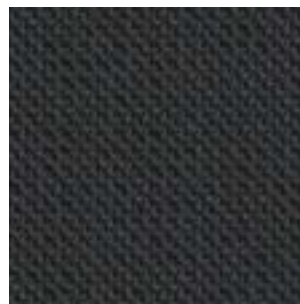
SC60003



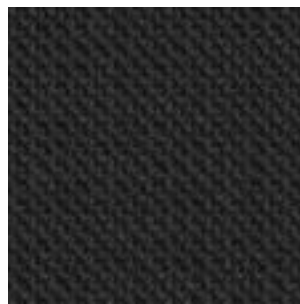
SC62097



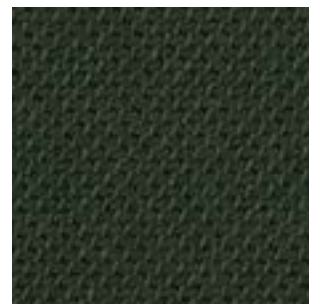
SC60999



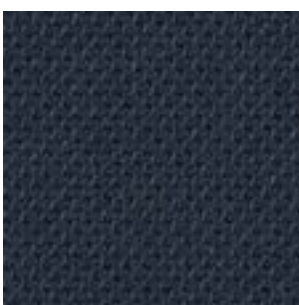
SC60134



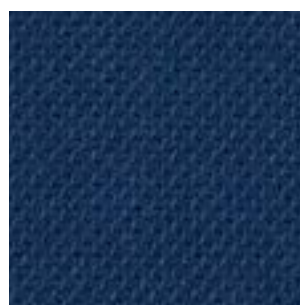
SC60051



SC68209



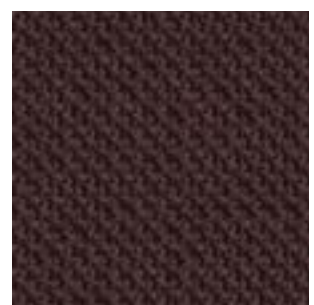
SC66194



SC66071



SC64216



SC61186

# Capture (Gabriel)

New Zealand wool – lightly felted  
– soft – durable

PG 3

Capture is a lightly felted and multi-coloured wool fabric combining softness, stretch and strength. It fuses light and dark colours to a refined melange pattern in subtle nuances, which add richness and depth to the design.



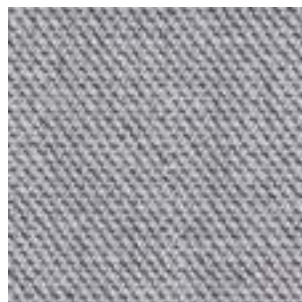
CPT6101



CPT5102



CPT6401



CPT4102



CPT4401



CPT6601



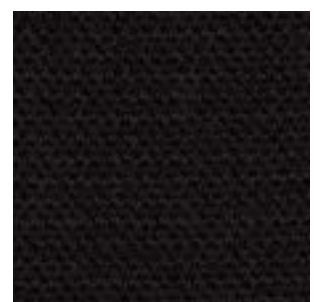
CPT4601



CPT6501



CPT5501



CPT5701

# Patina (Camira)

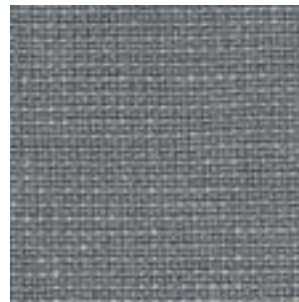
Wool/flax blend - fine structure - delicate feel - natural mélangé effect - durable

PG 3

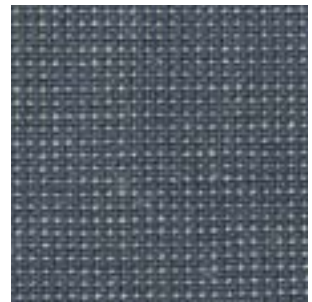
Patina has a high content of natural fibers, combining wool and flax for a delicate feel. Drawing inspiration from Pattern in Nature revealed to us by its fine structure and carefully balanced colours. It is about designing with nature to achieve beauty with performance.



PAT04



PAT34



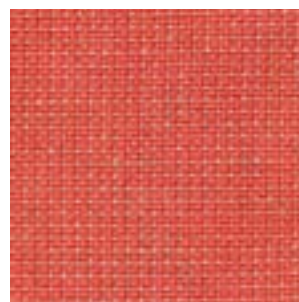
PAT24



PAT01



PAT16



PAT15

Please note that colours shown in these illustrations may vary from the actual colours.

# Nexus (Camira)

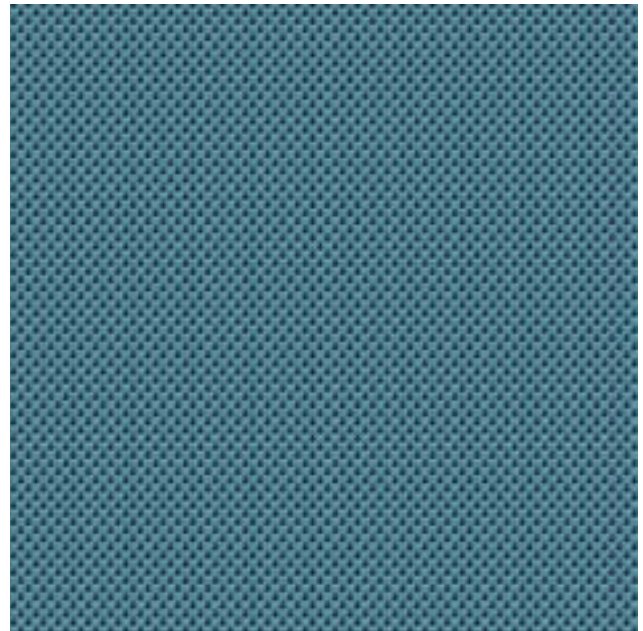
Wool/flax blend - fine structure - delicate feel - natural mélangé effect - durable

PG 3

Nexus is a polyester knit, offering a two dimensional stretch in a pinprick dot matrix design effect.



NEX16



NEX10



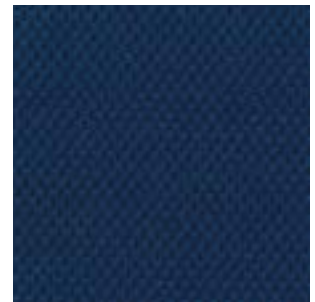
NEX05



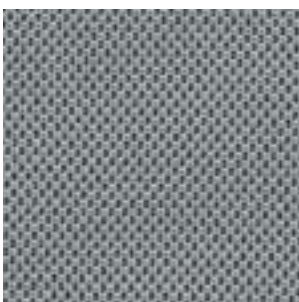
NEX08



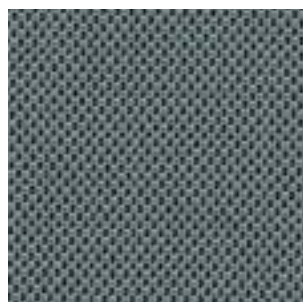
Nexus - NEX03



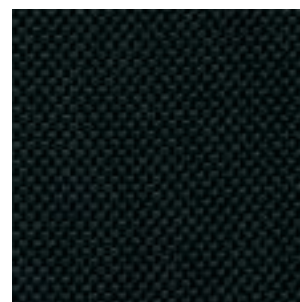
NEX15



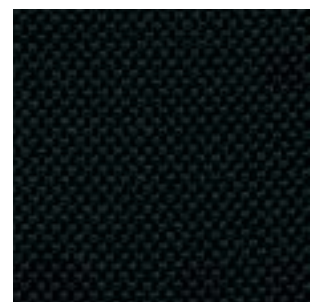
NEX07



NEX01



NEX11



NEX13

Please note that colours shown in these illustrations may vary from the actual colours.



# Note (Gabriel)

New Zealand wool worsted – satin  
structure – soft – strong

PG 3

Note is a soft and lustrous worsted wool with a classic satin structure. Its sleek design highlights the furniture's shape and sharpens its silhouette.



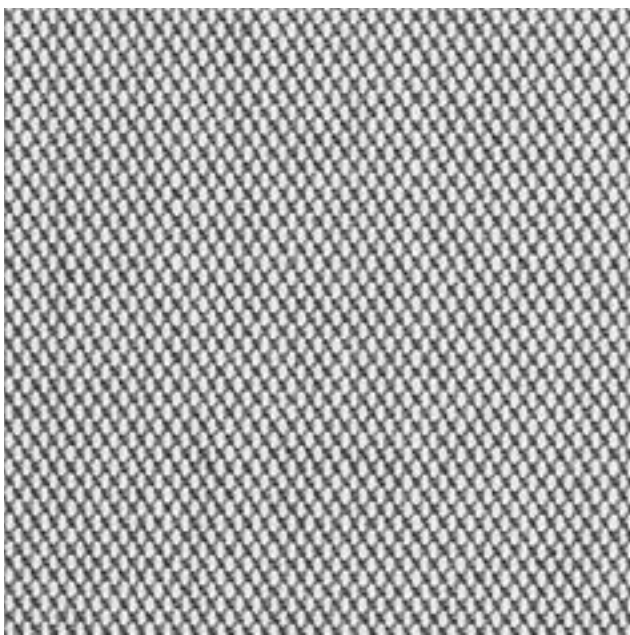
NT60999

# Steelcut trio 3 (Kvadrat)

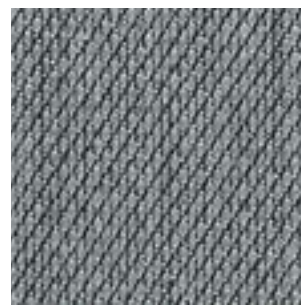
PG 4

New wool worsted – semi-plain structure –  
tricoloured 3D effect solid – hard wearing

Steelcut Trio 3 is a strong worsted wool and polyamide woven fabric, made with three different coloured yarns. The colours and the special weave create a three-dimensional surface where the colours seem to change depending on the angle of perspective.



STT133



STT153



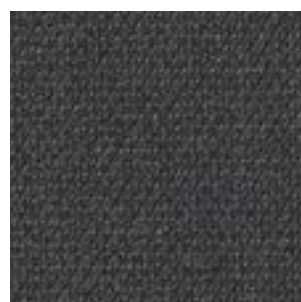
STT253



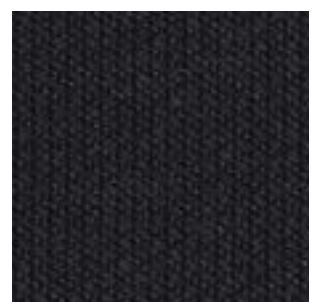
STT1652



STT883



STT383



STT1192

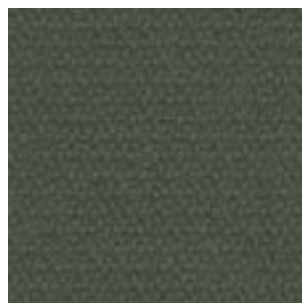
Please note that colours shown in these illustrations may vary from the actual colours.

# Sirdal (GU)

100% pure Norwegian wool – wollen – granité  
structure high resilience – durable

PG 4

Sirdal is part of the 100% Norwegian wool trio Sirdal, Suldal and Setesdal. These fabrics are uniquely short-travelled in every part of the process – 100% pure Norwegian wool manufactured in Norway. Norwegian wool with its distinctive brilliance, resilience and durability is expressed through rich structures that evoke authenticity paired with chic and modern comfort.



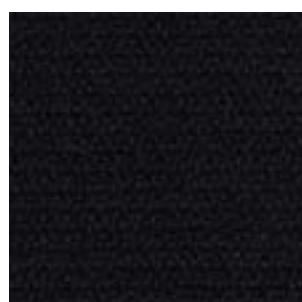
SRD960



SRD630



SRD730



SRD190

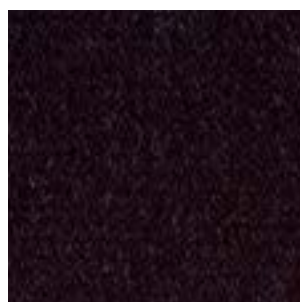
Please note that colours shown in these illustrations may vary from the actual colours.

# Suldal (GU)

100% pure Norwegian wool – wollen – granité  
structure high resilience – durable

PG 4

Suldal is part of the 100% Norwegian wool trio Sirdal, Suldal and Setesdal. These fabrics are uniquely short-travelled in every part of the process – 100% pure Norwegian wool manufactured in Norway. Norwegian wool with its distinctive brilliance, resilience and durability is expressed through rich structures that evoke authenticity paired with chic and modern comfort.



SUL180



SUL810

# Comfort+ (Gabriel)

37% recycled polyester – microfibre – soft –  
hard wearing

PG 4

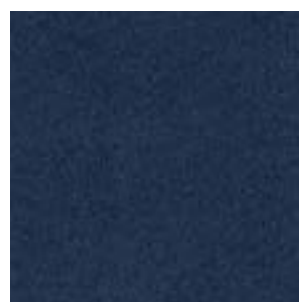
Comfort+ has a uniform stretchability and excellent non-pilling properties. A unique combination of fibres giving a durable soft surface.



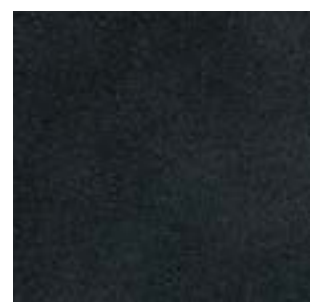
CMF1414



CMF0049



CMF0040



CMF0050

# Paloma soft (Wollsdorf)

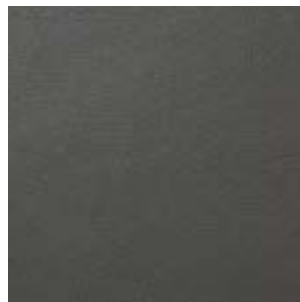
Semi-aniline leather – chrome-free – soft – high durability

PG 6

High quality semi-aniline leather. All our standard colours from Paloma have a special finish adding a particular softness to the leather. Excellent friction and breathing properties. The surface may feature small scars and marks resulting from insect bites etc. These are proof of the natural origin of the product and are part of its character.



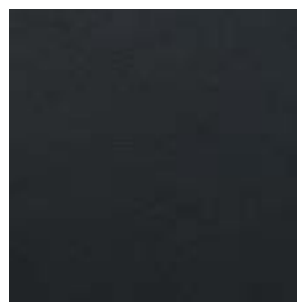
ATG55130



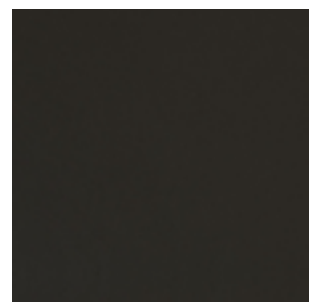
ATG55206



ATG55115



ATG55185



ATG56100

# Elmosoft (Elmo leather)

PG 7

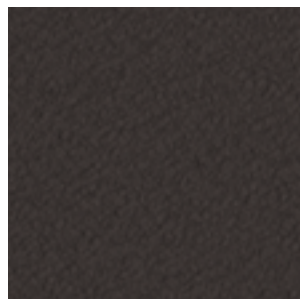
Supreme semi-aniline leather – chrome-free – soft – high durability

Elmosoft is a chrome free supreme quality semi-aniline grain leather from Scandinavian cattle. It is soft and pliable with an outstanding comfort and durability.

Visible insect-bites and scars from healed wounds add to the authentic quality and character of the leather.



EL99999



EL93068



EL33004

Please note that colours shown in these illustrations may vary from the actual colours.